



InstaCrete®

CONCRETE REPAIR EPOXY PUTTY STICK

Patch...

- chipped concrete
- floors
- patios
- steps
- curbs
- mortar

Repair...

- tile
- statues
- lawn ornaments
- birdbaths
- cemetery headstones
- cracks & seams

Anchor...

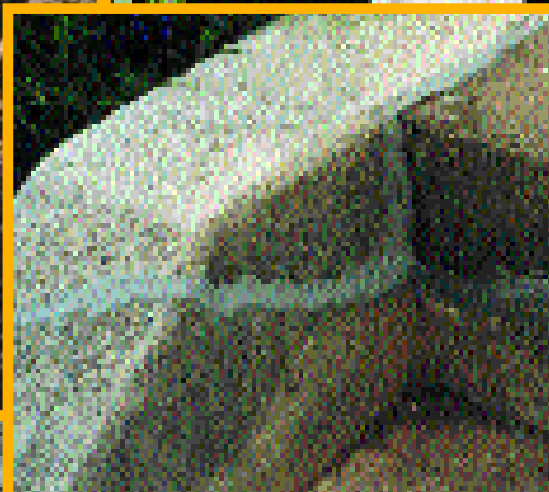
- bolts
- screws
- nails
- pipes
- railings
- legs

Seal...

- basement leaks
- tie rod holes



- **The Ultimate for Small or Emergency Repairs**
- **Easy-To-Use and Mistake-Proof**
- **Bonds Instantly with Superior Strength**
- **Saves Hundreds of Dollars in Repairs**
- **Belongs in Every Toolbox**



Made in U.S.A.

AMC
Marketing the Potential

Product Description

InstaCrete® Epoxy Putty Stick is a fast-setting polymer compound that enables permanent repairs to concrete and masonry. It also bonds to metals, wood, glass and many plastics. Each handy stick contains pre-measured portions of activator and base throughout – no measuring or mixing tools are necessary. As the epoxy is mixed, the two contrasting colors blend into one color to indicate complete mixing. The consistency (like modeling clay) eliminates drips and runs, facilitates adhesion to the substrate, and allows the material to be shaped and formed as needed before curing begins. Once cured, it can be tapped, drilled, screwed, sawed, filed, or painted, and will have an appearance and texture similar to concrete. Suitable for interior or exterior use, it is resistant to water, chemicals, and temperature extremes. InstaCrete® epoxy contains no solvents or VOC's. It's non-flammable and releases no noxious fumes. It won't shrink or pull away. The unused portion stays fresh for future use when saved in its original package.

Performance Data*

SHELF LIFE (months @ 75°F, min)	24
HARDNESS, SHORE D (full cure, 1 hr.)	80
LAP SHEAR TENSILE STRENGTH (p.s.i.)	
On Steel	600
On Concrete	Concrete Failure
COMPRESSIVE STRENGTH (p.s.i.)	12,000
DENSITY (gm/cm ³ , lb/gal)	2.0, 16.7
SHRINKAGE (%)	<1
NON-VOLATILE CONTENT (%)	100
ELECTRICAL RESISTANCE (megohms)	30,000
DIELECTRIC STRENGTH (volts/mil)	300
UPPER TEMPERATURE LIMIT	
Continuous (°F)	250
Intermittent (°F)	300
CHEMICAL RESISTANCE	
Resistant to hydrocarbons, ketones, alcohols, esters, halocarbons, aqueous salt solutions and dilute acids and bases.	

*Typical properties: for information only; not for specification purposes.

Packaging Options

InstaCrete® epoxy is available in 3 1/2" (2 oz.) and 7" (4 oz.) lengths. Individually packaged in reusable clear plastic tube with tri-lingual (English, Spanish, French) instructions and plastic friction top. Packed 12 sticks in display carton – 2 display cartons per master carton, or 24 sticks per shipper carton. 3 1/2" sticks are also available in blister packs (12 per carton).



Pop-Up
Cardboard
Display Carton



Blister
Packs



Acrylic Display
Racks

www.amc-products.com
info@amc-products.com

How To Use

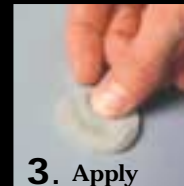
Before applying, roughen and clean the area to be repaired. Then follow these easy steps.



1. Cut



2. Mix



3. Apply

1. **Cut** or twist off required amount.
2. **Mix** by kneading with fingers to a uniform color. If mixing is difficult, warm InstaCrete® epoxy to room temperature or slightly above.
3. **Apply** to surface to be repaired (within two minutes of mixing). Force into any cracks or holes and strike off excess material, preferable with a tool wet with clean water.

When applying to a damp, wet or slowly leaking area, work the material forcefully into the surface and apply pressure until adhesion begins to take effect.

For Best Results: Use damp fingers for easier mixing and application. Remove excess material before hardening begins.

Curing: InstaCrete® epoxy has a work life of approximately 4 minutes. After 5–10 minutes it will harden and form a tenacious bond. Final cure occurs within 60 minutes.

WARNING

- May cause irritation to sensitive skin. Wash hands with soap and water after use.
- May be harmful if swallowed.
- Eye irritant. In case of eye contact, flush with water. Contact physician.
- Keep out of reach of children.
- Not intended for use in structural applications.
- When sanding cured putty and substrate, use protective eye wear and dust mask.

Applicable Standards

USDA Acceptable for use in federally inspected meat and poultry plants.

InstaCrete® Epoxy is one in a family of Specialty Epoxy Puttys originated and manufactured by Polymeric Systems, Inc. – also look for FastSteel, QuikWood, AquaMend, RepairitQuik, QuikCopper, QuikAluminum, and QuikPlastik. These Polymeric Epoxy Puttys give you the ability to fix just about anything.

AMC
Marketing the Potential

For More Info, Contact Us:

Unit 230, 12417 No. 2 Road
Richmond BC, Canada V7E 2G3
Toll Free: 1-888-680-2886
Fax: 1-877-241-9890